

**SAHODARAN AYYAPPAN SMARAKA**  
**SNDP YOGAM COLLEGE, KONNI**  
PATHANAMTHITTA, AFFILIATED TO M G UNIVERSITY, KOTTAYAM

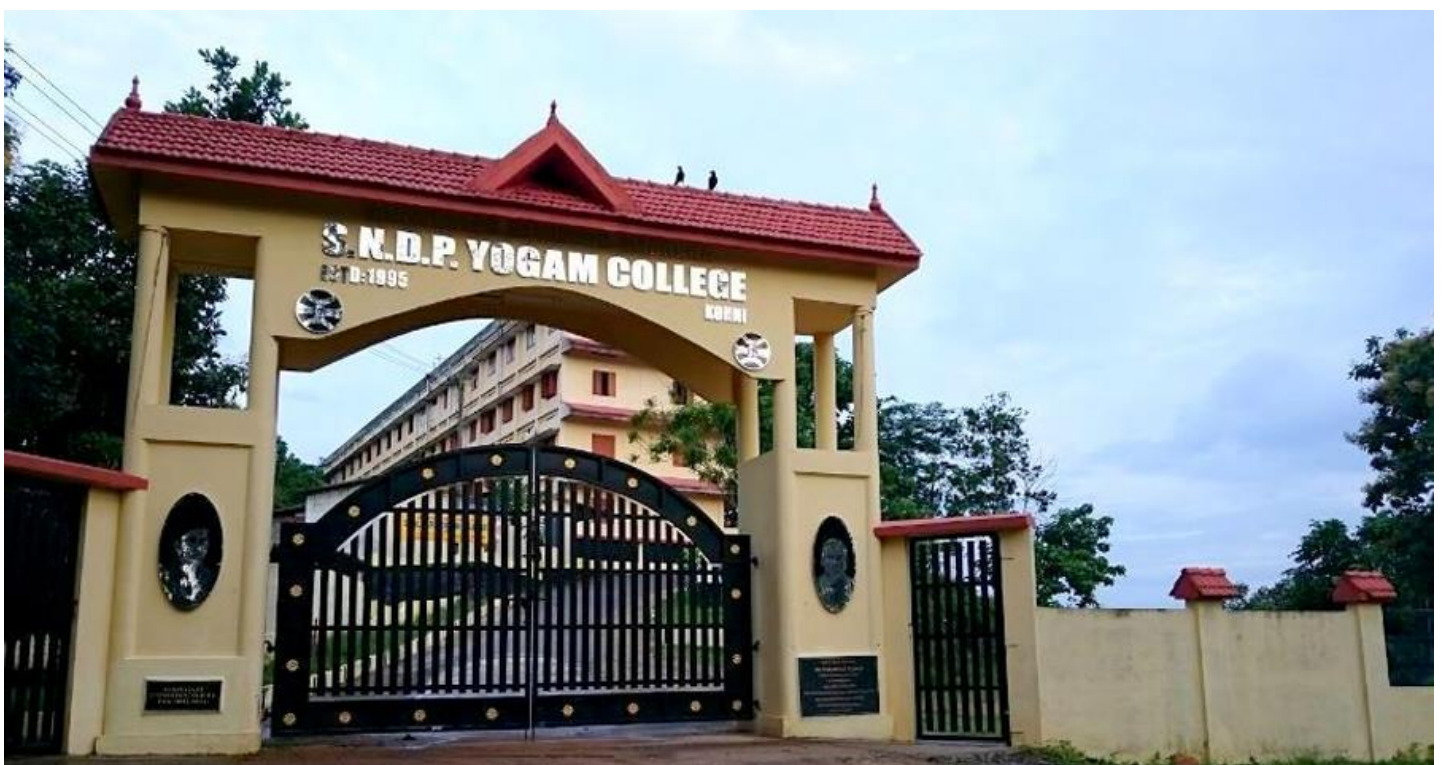
## **CRITERION 3**

# **RESEARCH, INNOVATIONS AND EXTENSIONS**

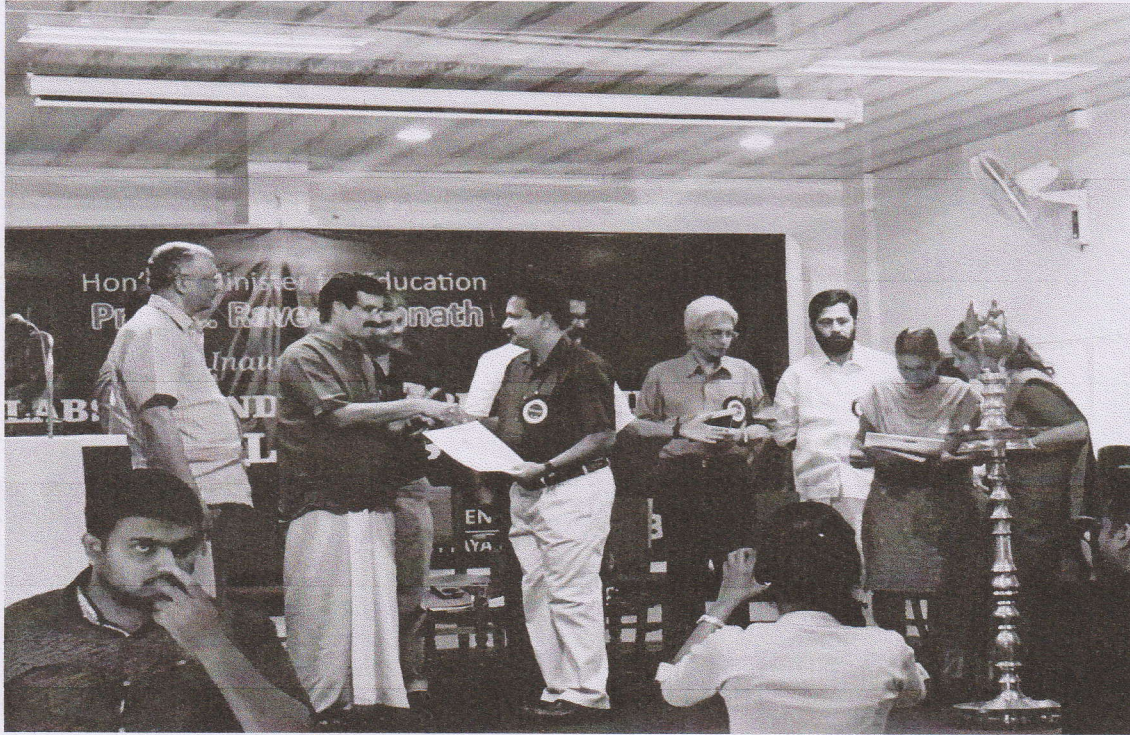
### **3.1 Resource Mobilization for Research**

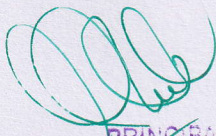
**3.1.1: Grants received from Government and non-governmental agencies for research projects, endowments, Chairs in the institution during the last five years (INR in Lakhs)**

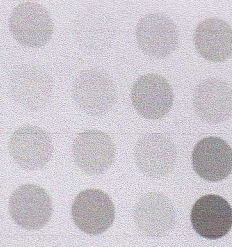
*Submitted to*  
**NATIONAL ASSESSMENT AND ACCREDITATION COUNCIL (NAAC)**  
**OCTOBER 2021**



Criteria 3.1.1



  
PRINCIPAL  
SAS SNDP YOGAM COLLEGE  
KONNI, PATHANAMTHITTA



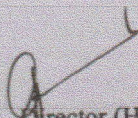
**MAHATMA GANDHI UNIVERSITY**  
**BUSINESS INNOVATION AND INCUBATION CENTRE (BIIC)**

**Student Start-up**  
(From Labs to Industry Programme (FLI) - 2018)

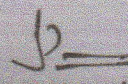
**Certificate**

This is to certify that..... SRI. RAJESH N.....

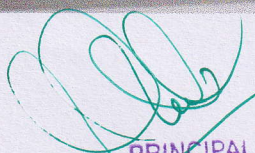
has successfully participated in the 'From Labs to Industry' Programme (FLI) 2018  
and is selected for student start-up grant.

  
Director (Hon.)  
BIIC



  
Vice-Chancellor  
Mahatma Gandhi University



  
PRINCIPAL  
SAS SNDP YOGAM COLLEGE  
KONNI, PATHANAMTHITTA